



OUTWOOD NEWS

**OUTWOOD
NEWS**

COPY DATE

**OCTOBER
2023**

**Friday
15th September**

*Late copy cannot
be inserted without
prior agreement.*

Outwood Matters
is the village email
distribution list.
If you would like
to be included on
this please email
outwoodsmatters
@gmail.com

Please submit
copy to:
anne.morle
@outwood.org

OUTWOOD VILLAGE SHOW

&

**Outwood Horticultural Society
Summer Show**

Saturday 2nd September

1.00 to 5.00pm

LLOYD HALL

**The Village Show is about fun and fundraising.
From the Coconut Shy to the Parish Council's
World Welly Wanging Championship in the Wells Field,
with the winners' names on a big wooden welly,
the money raised goes towards maintenance of
the Lloyd Hall and the Church yard.**

**Come for lunch with a beef burger or hallumi burger,
a glass of beer or tea and cake.
Visit the Horticultural Show in the Hall
or, better still, put in an entry!
You could win a silver cup!**

AUGUST & SEPTEMBER 2023

*Have people told you
you're ...*



**We are recruiting NOW
for Care Professionals
to support our elderly clients
in their Own Homes.**

www.homeinstead.co.uk/reigate

 **Home
Instead®**
To us, it's personal

**NO EXPERIENCE NECESSARY
FULL TRAINING GIVEN
£24.30 per visit [min].**

01737 529 793

lindsey.blake@homeinstead.co.uk

**Free estimates
& fully insured**



**PAChandyman
services**

**PAC Handyman Services is
your local solution to everyday
building, maintenance and
installation projects within
the home and garden.**



Tel: 01342 843348 | 07711 939370 | www.pac-handyman.co.uk

LLOYD HALL

OUTWOOD VILLAGE SHOW

SATURDAY 2ND SEPTEMBER
LLOYD HALL

Putting on the Outwood Show
needs people to visit, to man stalls,
or volunteer to take over a stall for an hour
to give someone else time for a cup of tea
and wander around.

Please give the Show your support
and let the organisers know this month
if you can spare some time to help in
September.

David
01342 843661

CHURCH NEWS

Rector's Ramblings

Last month we had a family reunion in France. My daughter Sarah, who lives 'Down Under' in Australia, was attending a wedding there and so my wife Judith and I, along with my three other children plus partners, all arranged to be together for a few days.

I say 'Down Under' but of course it's not really below us any more than it's above us. As a child I always imagined Australians walking upside down, but Sarah assures me that this is not the case! And that's because in space there is no top or bottom.

So when Sarah and I both look at the stars we both feel we are looking *up*, into space– but we can't both be right unless the earth were flat, which it isn't! Putting the northern hemisphere at the top of our maps and globes is just a custom we've grown used to, first started because the explorers and mapmakers of the sixteenth century came from the northern hemisphere. True, the earth rotates around what we call the north/south axis but there's no reason apart from custom to put north at the top. It could be at the bottom – or the side for that matter!

I've always liked lying on my back looking at the stars but I sometimes try and imagine that instead of looking up at them I'm actually looking down on them and the only thing that is stopping me falling down into infinite space is gravity pulling me into the earth and giving me the illusion that I'm looking up rather than down.

And talking of space, as I write this, there are currently seven people out in space aboard the International Space Station. As they orbit the earth, looking out at the planet, they are much more aware than we are on Earth that there is no up nor down, just Earth in space. Sixty-two years ago, Yuri Gagarin became the first man in space. Since then over six hundred people have been into space, in recent years including 'space tourists' (but you need awful lot of money to do that). One of them (an early astronaut, Russell Schweickart, on Apollo 9) said this:

You look down there and you can't imagine how many borders and boundaries you cross, again and again and again, and you don't even see them. Hundreds of people in the Middle East killing each other over some imaginary line that you're not even aware of, that you can't see.



CHURCH NEWS

And from where you see it, the thing is a whole, the earth is a whole, and it's so beautiful. You wish you could take a person in each hand, one from each side in the various conflicts, and say,

"Look. Look at it from this perspective. Look at that. What's important?"

Not much has changed since then, though now we have three Americans and three Russians in space, along with someone from the UAE. If only we were as united on Earth as those men in space are and if only we didn't have to go into space to realise that.

I'm pretty sure neither I nor you reading this will ever go into space (though you never know!). But we can all take a little bit of time this summer, before the evenings start to get cold, to look out at the night sky (though don't worry about lying on your back if that's difficult) and spend a moment seeing things from a different perspective and also, whatever your personal beliefs might be, to say a little prayer for our world and for everyone who is part of it – whether 'down under' or 'up above'!

With love and prayers

Nicholas

Revd Nicholas Calver

The Rectory, 5 The Acorns, Smallfield RH6 9QJ

Email: nicholas.calver@btinternet.com

Tel: 01342 842224

TEA IN THE CHURCHYARD

St John the Baptist Church Tea in the church yard

2.30-4.30pm on;
12th & 26th August

As a thank you, to National Lottery Players for the Heritage Lottery Funding we received to repair our stonework, if you bring valid proof of purchase of a recent national lottery ticket you will receive Afternoon Tea for free.





MR Computing Ltd



The computer repair shop that comes to you at an agreed time/day, no waiting around and no need to transport your IT equipment.

- **NO FIX NO FEE**
- Visiting computer/IT support for home & office
- New computer supply & setup to be familiar
 - Reliable wireless range improvement
- Computer speed up, repairs, data recovery
 - Remote support



Call: 01342 349109 / 0800 6129534

Email: office@mrcomputing.net

www.mrcomputing.net

Reviews: fb.com/mrcomputingltd/reviews

Outside In Locksmiths

Available 24 Hours

0800 772 39 72

Domestic, Commercial, Landlord.

Lock Outs, New Locks,
Lock Repairs.

Wooden, Upvc, Composite
and Aluminium doors locks
repaired.

Fully Insured.

Free Quotes.



checkatrade

outsideinlocksmiths.co.uk



local babysitter available !

- lives in outwood
- fifteen years old
- babysitting experience
- happy to cook + entertain kids

contact me - olivia
07521 460413

miss.oliviam@icloud.com

WANT TO ADVERTISE IN OUTWOOD NEWS?

This space is just £60 p.a.
- only £6 per edition!

contact

John Mankelov: **01342 842764**

or

Anne Morle: **01342 843336**

D C Read Builders & Landscapers



01342 843023

'Quality Workmanship'
info@dcreadbuilders.vpweb.co.uk
www.dcreadbuilders.co.uk

07706 467803

JULY 2023

In this age of fake news, questionable internet information and unreliable politicians, we all need to maintain a critical faculty in order to survive. Our visiting speaker in July – Reverend Dr. Nicholas Henderson - inspired our members to ask, “What DO we actually believe?” as he took us on a tour of strangeness; he began with historical mysteries such as the Bermuda Triangle and suggested rational explanations for seemingly inexplicable phenomena, such as ghosts and aliens. Having trained at Oxford for the Anglican ministry, Nicholas has performed as a bishop in Africa, as well as lecturing internationally. He brought with him a wealth of experience and knowledge about the supernatural and science: we learned about barrel clouds, infra sound waves, the magnetic polarity of the earth and “jelly holes” in the Arctic! As a WI group, we strive to educate as well as entertain and this afternoon certainly stretched our grey matter!

Our next meeting on August 1st will be our summer lunch event.

Bring on the Pimms!

Elizabeth Dyke



GRACE OSBORN

Grace Osborn died peacefully at East Surrey Hospital on 9th July 2023 aged 94.

Grace lived in Outwood at 1 Millers Copse from 1966 to 1983, living the rest of her life in Smallfield. She was well known to many people in Outwood and was active up until her late eighties in:

The WI, The WRVS at East Surrey, Liberal Democrats

She was a Cruse Councillor for many years, a keen gardener, and was still playing cards with her close friends well into her nineties.

She leaves three sons, Robert, John and Andrew, ten grandchildren and four great-grandchildren.

Check them out before you call them out!

RLM[®] LOCKSMITHS

When you need a locksmith it is tempting to choose the first one you come across on Google. Unfortunately, this can sometimes be a costly mistake. There are many good, honest, decent locksmiths but there are also some rogue traders out there too.

How do you find a good local locksmith that you can trust to do a good job for a fair price?

Check out online reviews or get personal recommendations. This is a really good way of finding out how other customers rate the quality of their work. Find out if they are a member of Surrey County Council's traders4u scheme - Trading Standards approved.

These locksmiths are vetted and approved. RLM Locksmiths are your local trusted locksmith service, Trading Standards approved and available 24 hours a day for when you need us the most.



Call us on:

07837 917621

WWW.RLMLOCKSMITHS.CO.UK

Amie Electro

Amie Electro the friendly and professional Electrician you can trust.
Residential and commercial, single phase and three phase.
Complete and partial rewires.

Fusebox replacement and upgrades.

Inspection, testing, certification, maintenance and more!



Susanne Heldwein trading as
Amie Electro. Thorough,
methodical and solution
oriented work attitude. Active, positive,

straightforward and ethical approach. All works
carried out personally.. taking good care of
your property. Offering the full range of
domestic and commercial electrical services.

Qualified with distinction as electrical installer
(Munich, Bavaria, West Germany 1990). Established
in the UK in 2011. City & Guilds Level 3 Diploma
in Electrical Installations.

Part P registered.



Domestic & Commercial

Part P registered

01342 888654 / 07951 179146

mail@amie-electro.co.uk

Find the reviews
@ www.amie-electro.co.uk

Single Phase & Three Phase

Amie Electro

NATURE WATCH

Like many others I had noted the almost complete absence of swallows this year, that is until I had a telephone conversation with Lyn Wilson of Rookwood Farm and a subsequent visit. Among the typical collection of farm buildings is a large barn full of stables and the first sign of swallows was the thick, white line of bird droppings on the floor at the entrance from the regular roost on the beams above. Then as we walked slowly through there were many swallows, some perching and others flying in and out, plus nests fastened down with mud. Lyn said she reckoned there were currently fifteen nests, fifty or more birds and by the time they had raised their final broods there would be approximately one hundred compared with about seventy last year. Lyn is up and about to feed the horses at 5am and said that by the time she's finished the bird calls are so loud that they give her a headache. Swallows have been visiting the farm for some years, arriving this year on 7th April. The swallow (*Hirundo rustica*) spends its winters in South Africa and then migrates following their food supplies through Europe arriving in the UK in March and April, a distance of 6000 miles, where they spend the summer months breeding, many birds producing up to three clutches of five eggs before their return in September and October.

It is estimated that 44% of birds return to nest in the same area as in the previous year, often to their old nests where they proceed to clean them up, replacing old material with new and putting a new rim of mud around the nest – Lyn keeps a muddy pool ready just outside the barn. The distinctive birds are glossy black with red throats and white underparts and their average lifespan is four years but some are known to live for ten years or more.

Swallow at Rookwood Farm



Last month I referred to the problems affecting many of our trees and shrubs following the unseasonal weather conditions of last winter and the first few months this year and picked out a couple of examples. One was the sapling elm tree, which seemed to have dodged both Dutch elm disease and the weather when leaves appeared late, but the prolonged dry spell finally took its toll. However, on the bright side, the second was our winter flowering cherry, which is not only thriving, but the very late arrival of its leaves has meant that they have avoided the various diseases that normally result in the twisted, curled and early leaf fall. Also, despite the difficult conditions our wild flowers are continuing to put on a good show and give us yet more proof of natural selection – the best conditions for each plant. Like the hundreds of yellow spires of agrimony (*Agrimonia eupatoria*) along the edge of the common running between Millers Lane and the track down to the cricket club. Common agrimony aka church steeples or sticklewort is a member of the Rosaceae family and in folklore was used to treat eye conditions and was associated with fairies and their magic.

A further report this month comes from keen nature spotter Ann Hooper Smith who kindly sent some photographs of a rabbit carrying a lot of grass in its mouth. She said she had never seen this behaviour before and wondered why. Neither had I but the explanation is that this rabbit was female and was collecting grass for nest building for its next litter.

Mike F Johnson

WANT TO ADVERTISE IN OUTWOOD NEWS?

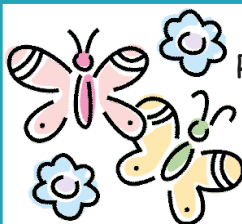
This space is just £90 p.a.-
only £9 per edition!

For more information and
to check availability please
contact

John Mankelow:
01342 842764

or

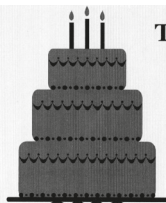
Anne Morle:
01342 843336



BABYSITTING

Reliable teenage
girl from
Outwood
available for
babysitting.

Please contact Aine Martin
07462 275707



The Pink Cake Company

tiered wedding cakes
cupcake towers
cakes with edible images
feature cakes
afternoon tea cakes

lynnemessenger@hotmail.co.uk
07780 705961



Home or Office

**Desktop – Laptop – Network
Specialists**

We Come to You!

On-site or pickup and return service

Fixed price repairs - 1000+ Clients
30 yrs+ experience - No Fix No Fee

Call Steve or Caroline

01342 834267

07771 666759

enquiries@sensiblepcsolutions.co.uk

www.SensiblepcSolutions.co.uk

**KEEPING OUTWOOD
BUG FREE FOR 25 YEARS**



Connecting the
Arts and Crafts
community

UKCraftFairs.com

PAT CARTER

For all your electrical work

Tel: 01342 843883

Mobile: 07711 478890



Estate Agency. Reimagined

Why Maison?

- We focus on home staging to optimise your selling potential
- Our fee structure is more competitive than traditional high street agents
- Every instruction is overseen by one of our experienced local partners
- Our services are available seven days a week

Your Local Partner

Your Surrey partner, James grew up in Outwood and still lives in the village with his wife and children. James has over 20 years' experience selling homes in Surrey.



Maison

james@maisonpartnership.com | 01737 929 880

MWD HOME IMPROVEMENTS

DOUBLE GLAZING REPAIR SERVICES

- ◆ HANDLES
- ◆ HINGES
- ◆ LOCKS
- ◆ REPLACEMENT DOUBLE GLAZED WINDOWS

NEW SERVICES

- ◆ WINDOWS
- ◆ DOORS
- ◆ FASCIAS & SOFFITS
- ◆ CLADDING

EMAIL: MWDHOMEIMPROVEMENTS@OUTLOOK.COM

TELEPHONE: 01342 818023

MOBILE: 07745 703730

Claire Coutinho MP

MEMBER OF PARLIAMENT
FOR EAST SURREY



Since I was elected, I've held regular surgeries with local residents to talk about the issues that matter to them.

I've also been holding regular remote surgeries by telephone, so if you need any help or want to raise an issue of importance to you, please don't hesitate to email or call me to set up a meeting.



Claire

0207 219 5972

clairecoutinho.com

claire.coutinho.mp
@parliament.uk

claire4eastsurrey

@clairecoutinho

Powered by Tan Hui, on behalf of
Claire Coutinho, both at 6 Godstone
Road, Lingfield RH17 6SW

WANT TO ADVERTISE IN OUTWOOD NEWS?

This space is just £90 p.a.
- only £9 per edition!

For more information
and to check availability

please contact

John Mankelow:

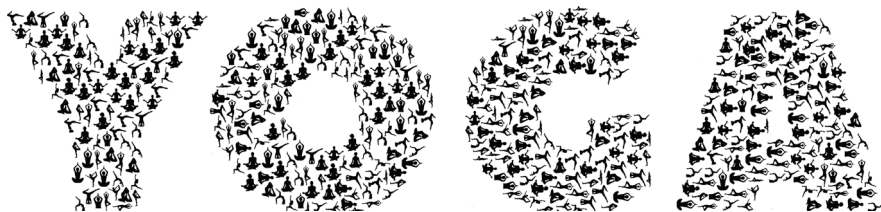
01342 842764

or

Anne Morle:

01342 843336

anne.morle@outwood.org



at Lloyd Hall, Outwood

Wednesday 1.30pm to 2.45pm

Classes are suitable for all levels

Contact Jackie on tel 07880 744370 or email jdyson7@hotmail.com

For more information: www.jackiedyson.co.uk



Open Garden and Picnic

Unique 15 acre garden in Charlwood to explore



Sunday 20th August

For the first time this extraordinary garden will be open to the public and we are delighted that Robin Redmile-Gordon and his wife, Ri are supporting St Catherine's Hospice.

Robin started landscaping the garden in the 1990's when the plot consisted of two trees and a few empty fields that a local farmer kept cattle on. He has created themed areas such as the Great Barrier Reef, New England, Hollywood, Cyprus Avenue and Royal Mile. (New England was for Re because she misses the spectacular Fall season on the East Coast of the USA).

Robin has described his venture as "a very organic experiment".

A part of the garden, called the Gulf of Mexico, is a balancing pond which collects surrounding water which from there drains into the lake, via the Lake District and the Grand Canyon. Through his vision and determination he has created a spectacular garden.

We hope you can join us for this exciting event. Please bring a picnic to enjoy in the gardens. Please book early to avoid disappointment.

Ticket Option 1: arrive at 11am for private guided tour by Robin followed by open garden and picnic. £17.50 per person. (limited numbers)

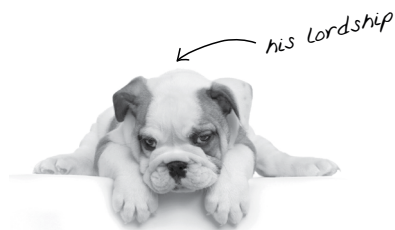
Ticket Option 2: arrive from 12.30pm for open garden and picnic. £10 per person, children free.

No dogs please.

For tickets and information contact christine@themankelows.co.uk , Tel: **842764**. Please state which option when booking.

Thank you for the girls of Burstow group.

Treating Your Pets Like Royalty



Crown Vet Clinic

1 The High Street
Nutfield, Redhill,
Surrey RH1 4HH
crownvets.com
t: 01737 822250

Opening times:
Monday - Friday
8.30am - 6.30pm
Saturday
9am - 11.30am

Miss Nicola Williams Consultation by
Mr Michael Taylor appointment

ANTIQUE FURNITURE RESTORATION

ALL ASPECTS OF
FURNITURE REPAIRS AND
POLISHING UNDERTAKEN

INCLUDING MODERN
FURNITURE

30 YEARS' EXPERIENCE

FREE ADVICE AND
ESTIMATES GIVEN - CALL

STEVE PEACOCK
01883 743879

Home Of Reflexology

Based in Outwood Village



Do you want to find an oasis of relaxation and calm in our picturesque village?

Are you looking for a way to unwind, improve your mood and de-stress in a peaceful environment, just minutes from your home?

Restore that feeling of well being, improve your sleep and take time for yourself

Reflexology is suitable for everyone, and appointments are available throughout the week

Vouchers are available for that perfect gift!

To book or for more information contact Catherine

tel: 07741 300 720

email: catherine@surreyreflexology.com





CHARTERED DESIGNERS PROJECT MANAGERS

Architecture ❖ Interior Design
Engineering ❖ Surveying
Town Planning ❖ Project Management

**For all aspects of building
design and construction**

Contact Bill Morle FCSD MFPWS

01342 843336

email: bill@a-bdesigns.co.uk



Cheeld Wheeler & Co

CHARTERED CERTIFIED ACCOUNTANTS

Taxation and Accountancy services for:

- Individuals
- Partnerships
- Charities
- Limited Companies

Call: 01737 224891

www.cheeldwheelerandco.co.uk

Helgaz Flowers

Modern & Traditional Floristry

Flowers to suit all budgets

**Weddings, Funerals
and all other occasions**

01342 843777

helgazflowers@gmail.com

www.helgazflowers.co.uk

Please like us on 

1b Wheelers Lane, Smallfield, Surrey RH6 9PT



OUTWOOD PARISH COUNCIL

There will be a 'volunteering' afternoon from 1-4pm on Sunday 20th August in Wells Field. This will focus on hedge trimming after the end of the nesting season.

From Ashlie Williams, the NT Ranger:

"There will be 4 heritage sheep grazing the Outwood community orchard in the next few weeks. The ewes are owned by a local couple that would gradually like to grow the flock. Historically, sheep have grazed the orchard and various other fields around the estate as they help with the conservation of grasslands. Whilst the sheep are grazing, we will be requesting that no dogs are taken into the orchard as we wish to avoid any injuries or stress to both the sheep and dogs. I very much want people to still visit and enjoy the orchard as it is a lovely spot for picnicking and relaxing. The ewes are Shetland sheep, they are small, hardy, and recognised for having a docile and calm temperament. We anticipate that they will be in the orchard for 3-5 weeks, this however, is dependent on how quickly they eat the grass. The flock will rotate between the orchard and other fields. Signage with contact details in case of any issues will be erected on the gates."

There will be no Council meeting in August, the next one being on 6th September at 7.30pm.

As the world gets crazier with each passing week, it is comforting that 'our world' in this corner of Surrey remains normal (whatever that means!) with nature doing its thing and the seasons doing their beautiful thing.

Have a good Summer.

MEMBERS OF THE PUBLIC ARE INVITED TO ATTEND ALL OUR MEETINGS

Next meeting:

Wednesday 6th September 2023, 7.30pm in the Church Room

For more detailed meeting reports and any current planning applications please visit the website at www.outwood.org and click on Parish Council

CONTACT DETAILS

PARISH COUNCIL MEETINGS

Meetings are held each month except August and December

PARISH COUNCILLORS

Mary Baldock National Trust / Community Matters baldock.mary@googlemail.com 07936 166557
Helena Devlin Highways velma9612@gmail.com 07718 278402
Jane Howard Chair - Footpaths / Bridleways janeweston899@btinternet.com 07753 602656
Anna Malley Planning anna.malley1@gmail.com 07802 581006
Nick de Wiggondene-Shepard Vice Chair -Planning
nickdewiggondene@hotmail.co.uk 07788 923495

PARISH CLERK

Rodabe Rudin Email: parish.clerk@outwood.org Tel: 07592 151985
Address: 2 Dirty Lane, Ashurst Wood, West Sussex RH19 3RY

DISTRICT COUNCILLORS

Mick Gillman 01342 893233
Sue Farr suefarr@btinternet.com
Richard Smith 07702 077673

COUNTY COUNCILLOR

Chris Farr Chris.Farr@surreycc.gov.uk

SURREY COUNTY COUNCIL

General 03456 009009
Pot Holes 0300 200 1003
Verge Cutting 01342 837666

www.surreycc.gov.uk

MEMBER OF PARLIAMENT

Claire Coutinho
Email: claire.coutinho.mp@parliament.uk
House of Commons (Direct Line) 020 7219 7643
Constituency Office Oxted 01883 715782

TANDRIDGE DISTRICT COUNCIL

General 01883 722000

Noise, dangerous structures,
pest control, pollution, flooding,
tree enforcement etc.

Amenity Services 0800 7834843

Abandoned cars, flytipping,
graffiti or vandalism.

Rubbish collection BIFFA 01342 837346

Removal of unwanted vehicle 01883 732998

www.tandridge.gov.uk

GATWICK AIRPORT NOISE

Automated line 01293 311568

Flight tracker on Gatwick Airport website

REDHILL AERODROME NOISELINE

Please copy any response received 01737 888123
using this Noiseline to the Parish Clerk

LLOYD HALL

Booking Enquiries

Telephone 07435 882640
Email: lloydhall.outwood@hotmail.co.uk

Management Committee Secretary

Jane Forbat 01342 842834
Email: lhmc@lloydhall.org

NATIONAL TRUST

Harewoods Estate Office 01342 843225
Ranger - Ashlie Williams
Email: harewoods@nationaltrust.org.uk
www.nationaltrust.org.uk

NEIGHBOURHOOD WATCH

Tandridge Neighbourhood Policing Team
Email: tandridge@surrey.pnn.police.uk
Mark Osland Email: outwoodnw@gmail.com

POLICE

Emergency Attendance 999
Report non-urgent incidents 101

Crime Prevention Advice

Mark Howells

Email: mark.howells@surrey.pnn.police.uk

PS Brooker is the Southern Sergeant

Email: Joshua.Brooker@surrey.pnn.police.uk

The PC's for our area are Lee Newman and
Rowan Futter

Email: Lee.Newman@surrey.pnn.police.uk

Email: Rowan.Futter@surrey.pnn.police.uk

USEFUL NUMBERS:

PEST CONTROL (Rats, wasps etc.)

Balcombe Pest Control 01444 811916

BIFFA Special Collections 01883 712333
(Option 2)

Fridges, Freezers, Furniture etc.

OUTWOOD'S PUBLIC TRANSPORT

**Note: 315 stops (and drops off)
anywhere in the village when hailed.
For simplicity the times are given for
Millers Lane.**

**Please make timing adjustments
for stopping elsewhere.**

315 Cruiser Service

Times to and from Redhill, but this bus also
goes to Dormansland via Smallfield

Monday to Friday only

Leaves Millers Lane	07.48
	10.25
	13.50

The 10.25 and 13.50 buses also go
to East Surrey Hospital via Redhill.
Buses leave the hospital at 12.15
and 17.05 to return to Outwood.

Leaves Redhill Bus Station	09.00
	12.25
	17.15
<i>Fridays only</i>	15.37

On school days there are also
buses from Millers Lane at 07.45

East Surrey Rural Transport ESRTP

Bookings and information: 01883 701270

Website: www.rtp@esrtp.org.uk

*Information provided by
Outwood Parish Council E&OE*

OFFICE OF THE POLICE & CRIME COMMISSIONER FOR SURREY

Lisa Townsend
Police and Crime Commissioner



The public can contact the Office of the Police
and Crime Commissioner in the following ways:

Telephone: 01483 630 200

Email: SurreyPCC@surrey.police.uk

Website: www.surrey-pcc.gov.uk

COMMUNITY SPEEDWATCH

**Are you willing to take
on the position of local
co-ordinator held for
many years by
Nigel Shaw?**

**Please contact
Outwood Parish Council
for more information.**



St John the Baptist, Outwood

Services and activities in August and September

Sunday 6 August

- 8am Holy Communion at St Mary's Horne
according to the Book of Common Prayer
- 11am Joint Windmill Benefice service to celebrate
Lammas at Hookhouse Farm

Saturday 12 August

- 2-4pm Teas in the Churchyard

Sunday 13 August

- 11am Holy Communion

Sunday 20 August

- 11am Morning Worship

Saturday 26 August

- 2-4pm Teas in the Churchyard

Sunday 27 August

- 11am Holy Communion

Sunday 3 September

- 8am Holy Communion at St Mary's Horne
according to the Book of Common Prayer
- 11am Morning Worship

Sunday 10 September

- 11am Holy Communion

Sunday 17 September

- 11am Harvest Festival Holy Communion

Sunday 24 September

- 11am Morning Worship

DIARY OF EVENTS

AUGUST

Tuesday 1st	WI SUMMER LUNCH 12.30pm - Lloyd Hall
Saturday 12th	TEA IN THE CHURCHYARD 2.30-4.30pm - St. John's Church
Sunday 20th	ST CATHERINE'S HOSPICE OPEN GARDEN & PICNIC (See page 13) Charlwood
Saturday 26th	TEA IN THE CHURCHYARD 2.30-4.30pm - St. John's Church

SEPTEMBER

Saturday 2nd	OUTWOOD VILLAGE SHOW & OHS SUMMER SHOW 1.00pm - Lloyd Hall
Tuesday 5th	WI MEETING - "Wartime Women" 2.30pm - Lloyd Hall
Wednesday 6th	PARISH COUNCIL MEETING 7.30pm - Church Room

OUTWOOD VILLAGE WEBSITE www.outwood.org

The website Diary page, maintained by Outwood News, lists all village events (*of which we are aware*) taking place up to a year in advance.

Why not take a look to avoid a clash of dates!

OUTWOOD HISTORY GROUP

A few of us villagers have got together to learn about the history of Outwood people and places.

We are going to store the literature and photos in a filing cabinet in the Lloyd Hall store room
(when we can find a lockable filing cabinet!)

This material will be available to everyone.

We will have keyholders who will make a note of who has borrowed what, so we can keep track of it.

Anyone is welcome to come to meetings, but we need to know numbers so that we can find a venue to fit us all in.

Phone 843661 to hear of the next meeting.

David

OUTWOOD NEWS

This space is just £160 p.a.
- only £16 per edition!

For more information and to check availability
please contact

John Mankelow:

01342 842764

or

Anne Morle:

01342 843336

anne.morle@outwood.org

GARDEN MAINTENANCE

We are a friendly and reliable family run business, specialising in complete all year round garden maintenance.

- GRASS CUTTING
- WEEDING
- HEDGE CUTTING AND SHAPING
- SEASONAL TIDY-UPS
- JUNGLE CLEARANCE
- REGULAR VISITS
- MAINTENANCE PLANS
- FULLY INSURED

FROM PRIVATE
INDIVIDUALS TO
MANAGEMENT
COMPANIES



TRUSTED
LOCAL BUSINESSES ✓

MOWING MACHINE GARDENERS

For a no-obligation free estimate please call

01342 529365 or 07771 922281

www.themowingmachine.co.uk

DPC

Groundworks Ltd

Contact: David Bridges

info.dpcgroundworks@gmail.com

Instagram : [dpcgroundworks](https://www.instagram.com/dpcgroundworks)

Fully insured
Private and commercial
General maintenance
Drainage and Klargesters
Land drains
Utility services
Earthworks and machine hire
Concrete surfaces
Paving
Swimming pools
Extensions
General building

07969 661014

01342 843883
07711 478890

PART P CERTIFIED
NICEIC APPROVED



Fusilier

Electrical Limited

Contact Pat or Adam Carter
info@fusilierelectrical.co.uk

www.fusilierelectrical.co.uk

PAUL RICHARDS UPHOLSTERY

**All aspects of Upholstery
and Re-Upholstery undertaken**

Fabrics and Foams Available

Quality you CAN Afford

Traditional Workmanship by a Skilled Craftsman



All Upholstery Carried Out In Our Own Workshops

20 Years Experience

*From Chairs to Chaise, Seats to Settees
Portfolio Available*

Free Estimates and Advice

Trindles Farm, Plough Road, Smallfield, RH6 9JN

Phone/Fax: 01342 619277

Mobile: 07949 510877

Paul.Richards.upholstery@gmail.com

CHRIS ANDREWS GARDEN MAINTENANCE

CITY & GUILDS HORTICULTURE

GRASS CUTTING,

HEDGE CUTTING,

TREE & SHRUB PRUNING,

BEDS & BORDERS WEEDED

& MAINTAINED, PLANTING,

GENERAL HANDYMAN SERVICES

ESTABLISHED 20 YEARS

REFERENCES AND PHOTOS AVAILABLE

CALL CHRIS

TEL. 01342 841583

MOB. 07810 748852

4 WHITEWOOD COTTAGES, WHITEWOOD LANE,
HORNE, RH9 8JR

L.A. ROWE

PLUMBING & HEATING

Tel: 01342 844 600

Mob: 07801 531 423

Working locally for 17 years

Bathrooms • Showers

Kitchens • Boilers

Central Heating

Gas Installation

Guttering & Leadwork



reg. number
028229W



164781



Gayton Veterinary Group

www.gayton.co.uk



We are open from Monday to Saturday
by appointment.

Monday to Friday | 9am - 7pm

Saturday | 9am - 4pm

Gayton House,
40 Hatchlands Road,
Redhill, Surrey RH1 6AT

01737 761475

7 South Parade,
Horley Row,
Horley, Surrey RH6 8BH

01293 771560

CAGNE

Communities Against Gatwick Noise and Emissions

The umbrella aviation community and
environment group for Sussex, Surrey and Kent
Tel 07831 632537

Statement from CAGNE concerning plans for a 2nd runway at Gatwick Airport Donate today to stop a 2nd runway at Gatwick Airport www.cagne.org

Gatwick Airport has submitted plans to the government's planning inspectorate to rebuild the emergency runway as a 2nd runway.

<https://infrastructure.planninginspectorate.gov.uk/projects/south-east/gatwick-airport-northern-runway/>

Gatwick has always struggled to find workers, and with automation of both the airport and the aviation industry, new jobs do not necessarily come with expansion. We have seen, time and time again, the lack of job-security due to the business model of the airport, providing low-cost flights predominantly to Europe. Long-haul flights seem to come and go, mostly according to whether Heathrow has slots available.

With the current cost-of-living crisis, the fact that greener fuels will cost some 3-5 times more than fossil fuel could hit Gatwick the hardest again, with a subsequent impact on jobs – as we saw with Covid and the last recession.

We are all facing a climate emergency, and many have now decided not to fly because they are aware of what flying is doing to the climate, aviation being one of the biggest threats our planet faces. No responsible owners of an airport should therefore be seeking expansion at this time, especially as a second runway would add over 1m tonnes[i] of extra carbon emissions a year, on top of those already produced from the main runway.

Because they are rebuilding the emergency runway rather than building a brand new one, it doesn't have to go through the normal National Infrastructure Planning process. This means that Gatwick gets a second runway by the back door, offering few benefits for surrounding communities or the environment. Nearly 100,000 extra flights a year are proposed, with a huge increase in freight lorry movements to and from the airport, as well as transport of drop-in greener fuels (as there is no storage infrastructure at the airport).

As academic studies showed through COVID – when Gatwick Airport is grounded, the air quality improves, as does the wellbeing of residents when they don't have the noise of flights, day and night.

We hope you will support our legal team in opposing this expansion by promoting the crowdfunding page which is available on our website - www.cagne.org as are other details on how to donate.

https://www.justgiving.com/crowdfunding/sally-pavey?utm_term=EdVYWqX4G

Thank you CAGNE Committee

OUTWOOD HORTICULTURAL SOCIETY

SUMMER SHOW

together with the
OUTWOOD VILLAGE SHOW
Saturday 2nd September 1-4.00pm

**SCHEDULE DELIVERED WITH THIS EDITION
OF YOUR OUTWOOD NEWS!**

**PLEASE HAVE A LOOK THROUGH THE
CLASSES AND SEE WHAT YOU CAN ENTER
– THERE IS SOMETHING FOR EVERYONE!**

DATE FOR YOUR DIARY

**Friday 24th November - OHS AGM and Supper
Lloyd Hall at 7.00pm**

*Credit cards
accepted*

HOMWOOD



HEATING

PLUMBING & BATHROOMS

- Plumbing • Boiler • Bathroom – Installations & Maintenance
- Accessible Bathroom Adaptions • Wet Rooms • Cloakrooms
- Electrics, Plastering, Carpentry, Tiling, Decorating & General Maintenance
- Boiler Service • Landlord Gas Safety Inspections • Powerflushing

FREE ESTIMATES & ADVICE call 07850 373955 or 01737 823888

www.homewoodheating.co.uk



ALEX JONES

FUNERAL DIRECTORS

HOME VISITS
AVAILABLE

MONUMENTAL
MASONARY

BEAUTIFUL PRIVATE
CHAPELS OF REST

PRE-PAID
FUNERAL PLANS

Lingfield

01342 832534

1 EAST GRINSTEAD ROAD,
LINGFIELD, RH7 6EP

Oxted

01883 730383

92 STATION ROAD EAST,
OXTED, RH8 0QA

Edenbridge

01732 860047

70 HIGH STREET,
EDENBRIDGE, TN8 5AS

Forest Row

01342 822399

1 ASHDOWN COURT,
FOREST ROW, RH18 5EZ

A TOTALLY INDEPENDENT FAMILY CONCERN

www.alexjonesfuneraldirectors.co.uk

Golden Charter 
Funeral Plans



The BELL INN



Natasha has taken over the position of Manager, here with us, after many years working with Jose. All licensed up and ready to go, so to book, just give us a call on 01342 891 835 or via our website at www.belloutwood.co.uk. "We'll do the rest".

Being busy, we're also on the look out for front of house team members. Minimum age is 16yrs or 18yrs for bar positions. Wage rates depend on your age & experience.

If you're interested or know of anyone who might be, please email your CV to us at samuipubco@outlook.com. Live-in is also possible in our Swiss Chalet, but the minimum age for this is 21yrs.

We hope you have a fantastic summer, and we look forward to welcoming you to enjoy it with us.

Very best, Steve, Nick and the team.



Summer has finally arrived and with any luck we'll enjoy a warm/ish autumn.



As usual we're planning ahead, with our Moules Nights in September, more special evenings through October including amazing Chinese food, taking us to one of the biggest nights of the year at The Bell; Firework Night, raising much needed funds for The HAM Charity at The Royal Marsden. Somewhat harder to comprehend is that we're planning our Christmas season menus already & then, before we know it, we'll all be marching to the orchards, torches lit, for Outwood's Wassail.

But let's hold onto Summer for as long as possible and enjoy the chance for some alfresco dining, spending later evenings outside enjoying food and a few drinks with us at The Bell. Scottie and his team have been producing some delicious summery menu choices, with more and more planned for Autumn. His own smoked dishes are going so well, I'm buying him a second smoking oven.

As always, Nigel and Penny at Brightleigh Farm are supplying us with delicious meats, our fresh salads and vegetables arrive daily from on the doorstep or within 40miles of the business & those items that we have to go further afield for, arrive here directly from the London markets. Amazing produce and our Chefs do wonders with it all.

We also have our dining/meeting room available for use by local groups, businesses, or organisations, from Monday to Thursday, if you're looking for somewhere to get together.

**Phone: 01342 891835
www.belloutwood.co.uk**

LLOYD HALL

The building offers attractive and modern facilities for many types of function.

Wedding Receptions, Banquets, Private Parties and Dinners can be accommodated, as well as regular bookings by local groups and organisations.

The Main Hall can seat over 100 while the two rooms of the Chilvers Suite are suitable for smaller meetings and clubs.

The Kitchen is well-equipped with commercial-quality fittings and fixtures.

All or part of the accommodation is available for hire at an hourly or daily rate.

For more information and to check availability contact the Booking Secretary:

07435 882640

enquiries@lloydhall.org

www.lloydhall.org



Providing Solar PV & EV charging Services

NICEIC & MCS Certified, 'Trading Standards' and 'Which' Approved

Now providing Solar PV design and installation. Electric Vehicle charge point installation.

Electrical Installation, Inspection, Testing and Certification.

All circuit work undertaken. Part P compliant.

Find me on the MCS national database as well as 'Trading Standards' and 'Which Trusted Traders' websites where **reputation** and **reliability** matters.

Contact **Chris Yeldham** in **Outwood**

01342 844642, 07801 519789, chris@yeloshield.co.uk www.yeloshield.co.uk

COFFEE MORNING

**We hold a Coffee Morning at Lloyd Hall
every Wednesday from 11.00 to 12 noon**

Everybody is very welcome to come along and make
some new friends whilst enjoying real coffee
and homemade cake
- only £3 coffee / £2.50 tea
and as much cake as you can manage.

WANT TO ADVERTISE IN OUTWOOD NEWS?

This space is just £90 p.a.- only £9 per edition!
For more information and to check availability please contact
John Mankelow: **01342 842764**
or
Anne Morle: **01342 843336**

OUTWOOD NEWS COPY DATES

ISSUE

October
November
December & January 2024

COPY DATE

15th September
13th October
17th November

NOTE: Please submit copy either as finished artwork (a PDF of the correct size) or,
if using WORD, in the simplest form. Please avoid using text boxes.

CONTENTS

	<i>Page</i>
CHURCH NEWS	4 & 5
CHURCH SERVICES	19
CONTACT DETAILS	17
DIARY	20
NATURE WATCH	9
OUTWOOD HISTORY GROUP	21
OUTWOOD HORT. SOC.	25
OUTWOOD VILLAGE SHOW	Cover & 3
PARISH COUNCIL	16, 17 & 18
POLICE & CRIME COMMISSIONER	18
PUBLIC TRANSPORT	18
ST. CATHERINE'S HOSPICE	13
W.I.	7

REPUTATION FOR TOP QUALITY ROOFING



FOLAN & JOHNSON **ROOFING SPECIALISTS**

Established in 1988



NFRC
LEADING ROOFING EXCELLENCE



Checkatrade

Traditional Roofing • Slating • Leadworks • Three Layer Flat Roofing • Horsham Stone • Velux Windows



- Handmade Clay Peg Tiles • 3 Layer Felt Flat Roofing • Traditional & Contemporary Tiling
- Natural Slate • All Aspects of Leadwork to BS1178 • CSCS Compliant

Tel: 01293 784304 • Mob: 07768 695616 • info@folanandjohnson.co.uk • www.folanandjohnson.co.uk

- ✓ Mot's
- ✓ Servicing
- ✓ Cambelts
- ✓ Diagnostics
- ✓ Clutches
- ✓ Batteries
- ✓ Tyres
- ✓ Exhausts
- ✓ Brakes
- ✓ Air con. etc.



A friendly, trustworthy, family run business
which has been built upon recommendation
since 1966.

For more information...
Please check out our website or give us a call.



All work is
carried out
in-house

Good Garage
Scheme Member
Since 2007



01342 842132

www.windmill-garage.co.uk

Outwood Common, Outwood, Surrey, RH1 5PW

Supporting you & your family

Morr & Co offer advice and legal solutions across a wide range of personal and family issues, helping you plan for the future, deal with the unexpected and prosper through life's ups and downs.

Our expert team can assist with:

- Family Law
- Residential Property
- Employment Law
- Wills, Trusts and Powers of Attorney
- Personal Injury
- Probate and Estate Administration
- Dispute Resolution
- Contested Trusts and Probate
- Business Law

MORR
& CO



01883 723712



info@morrlaw.com

Offices across Surrey, Hampshire & South West London

The law firm for business and life



MULTI-AWARD WINNING GARDEN DESIGNERS, PLANTERS & KEEPERS

Led by garden designer Nic Howard, We Love Plants offers comprehensive solutions for gardens of all shapes and sizes, our services include:

- Garden Design & Construction
- Inspirational Planting Schemes
- Specialised Maintenance
- Source & Supply of Garden Furniture

**we love
Plants**
GARDEN DESIGN
BY NIC HOWARD

01883 744 020 | we-love-plants.co.uk | hello@weloveplants.co



@nichowd



Nic Howard Garden Design

